



nature  
energy



Køng



April 19, 2024

# Sun, wind and biowaste



*Are the three natural resources for the production of green energy*

# And the global potential is great (calculations based on population)



# Nature Energy Korskro

Production: 36.1 million m<sup>3</sup> gas per year  
Biomass capacity: 1 million tonnes per year



Our plants are centralized and receive feedstock from a large radius

- With our **advanced technology**, we can process all organic waste within a radius of 25 km
- Our business model takes in manure from several **small and medium sized farms** (from 80 size herds)
- We continuously improve our design to handle **all types of organic waste and manure**
- Our upstream processes are **circular and indefinite**
- One Nature Energy plant can process up to 0.5-1 mil. tons of organic waste and residues annually

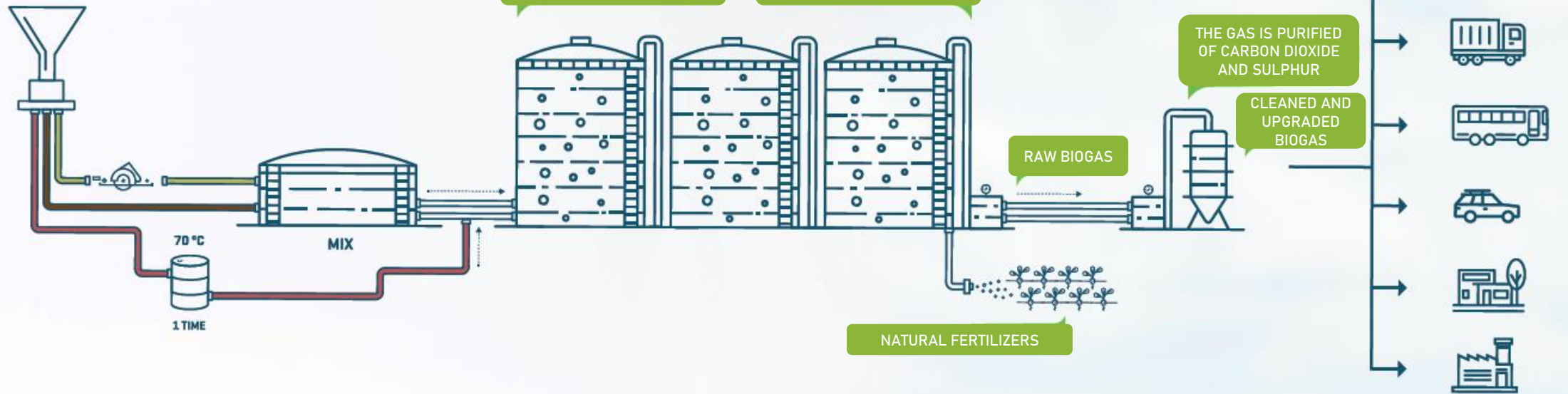


# Biogas in a large scale

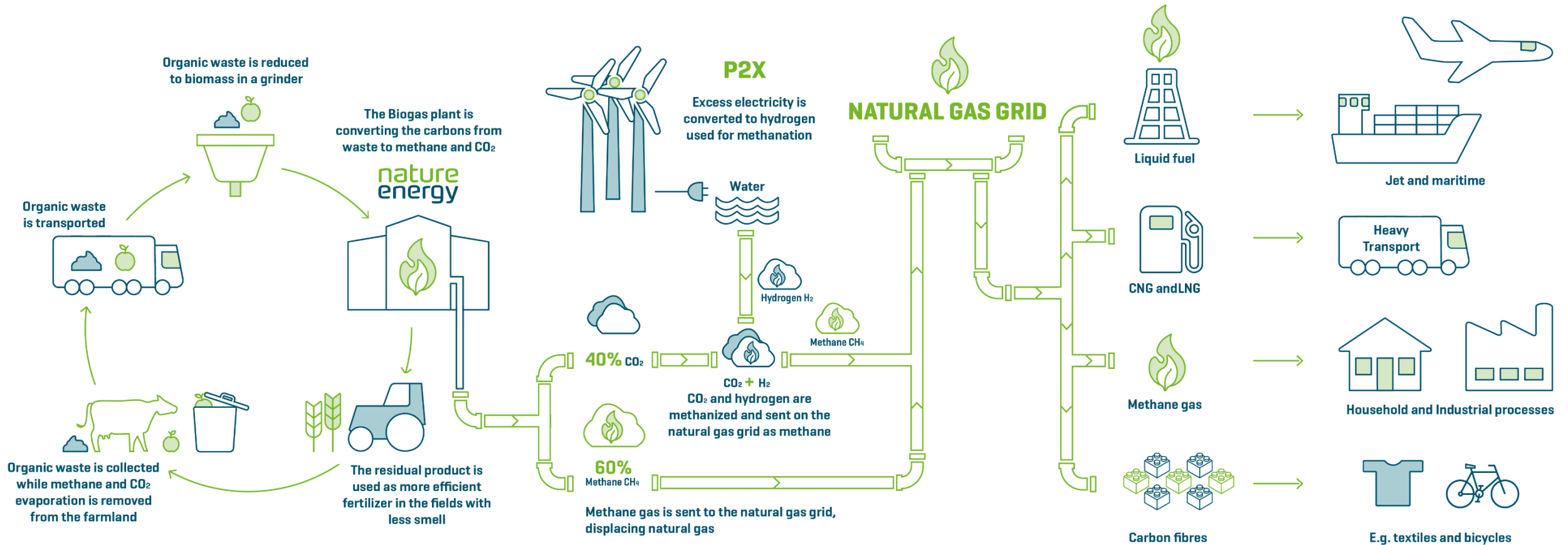
FOOD WASTE FROM HOUSEHOLDS AND BUSINESSES


SLURRY

DEEP LITTER



# Circular economy





The biogas plant is  
a nutrient factory  
to farmers



Our biogas plants is an effective system for recycling of nutrients



A typical Nature Energy plant produces 0.5 mil. tons of nutrient rich green fertilizer



Saving costs on fertilizers and improving the environmental footprint of the farms



Cover-crops solutions

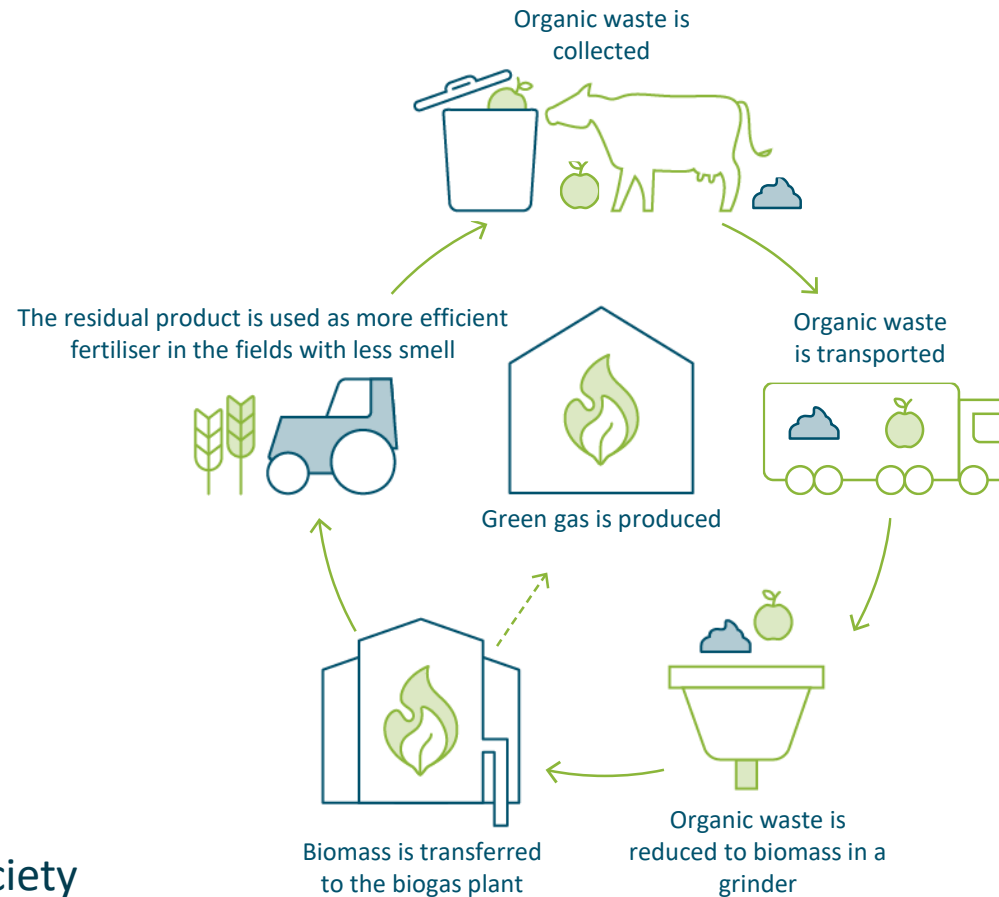


# Turning waste to value – benefits with large scale biogas



## The farmer

- Better fertilizer that can be spread more easily
- Farmer as energy-supplier
- Possibility to be a co-investor
- Economic savings as the biogas plant handles fertilizer accounting and transport of degassed biomass to the fields



## The society

- Biological waste and residues are turned into value
- Local energy production
- Reduced emissions of greenhouse gases
- With a portfolio of biogas plants, we can:
  - optimize transport,
  - buy large amounts of biomasses when the price is good,
  - optimize the biomass mix,
  - Have experts for specific knowledge



## The Municipal

- The municipality takes the final decision on establishment
- Handling of green waste/household waste
- Green fuel for local transport
- Option to carry out continuous control through the given approvals



## The Community

- Jobs at the biogas plant
- Jobs in local area
- Reduces smell when spreading the manure
- Other supports to the local community